



Door and Hardware Institute

PREMIER



Advancement
of Construction
Technology

PRODUCTS, INC.

P.O. Box 7269 • Monroe, LA 71211
(318) 361-0796 • Fax (318) 323-5068



Underwriters Laboratories Inc.®

HOLLOW METAL DOORS AND FRAMES

SINGLE DOORS

DOOR SWING CHART

PAIRS OF DOORS

APPROVAL

NO.	REVISION	DATE	DRAWN	DISTRIBUTOR	 RH RIGHT HAND REVERSE BEVEL INSIDE				 LH LEFT HAND REVERSE BEVEL INSIDE				 RH - ACTIVE RIGHT HAND ACTIVE INSIDE				 LH - ACTIVE LEFT HAND ACTIVE INSIDE			
					 RHRB RIGHT HAND REVERSE BEVEL INSIDE				 LHRB LEFT HAND REVERSE BEVEL INSIDE				 RHRB-ACTIVE RIGHT HAND REVERSE BEVEL ACTIVE INSIDE				 LHRB-ACTIVE LEFT HAND REVERSE BEVEL ACTIVE INSIDE			

JOB: _____

LOCATION: _____

CONTRACTOR: _____

ARCHITECT: _____

DRAWN BY: _____

DATE: _____

JOB NO. _____

SHEET _____ OF _____

GENERAL NOTES:

CO = CASSED OPENING
 DA = DOUBLE ACTING
 D/E = DOUBLE EGRESS
 KD = KNOCKED DOWN

PR = PAIR

SUTW = SET-UP TABS WELDED ONLY
 SUAW = SET-UP FACE WELD JOINT ONLY
 SUFW = SET-UP WELD JOINT FULL DEPTH

H = HONEY COMB CORE
 P = POLYURETHANE CORE
 PS = POLYURETHANE STEEL STIFFENED CORE
 M = LABEL COMPOSITE CORE
 F = FLUSH DOOR
 G = HALF GLASS DOOR
 G2 = HALF GLASS DOOR (W/2 LITES)
 G3 = HALF GLASS DOOR (W/3 LITES)
 LG = LONG GLASS DOOR
 LV = LONG VISION DOOR
 V = VISION LITE DOOR
 BL = BOTTOM LOUVER DOOR
 FL = FULL LOUVER DOOR
 WBO = WOOD BY OTHERS

4 = 1 1/2" THICK DOOR
 8 = 1 3/4" THICK DOOR

FRAME & GAUGE DESIGNATIONS

F-18 = CONVENTIONAL WALL FRAME, 18 GA.
 F-16 = CONVENTIONAL WALL FRAME, 16 GA.
 F-14 = CONVENTIONAL WALL FRAME, 14 GA..
 FE-18 = DRYWALL FRAME, 18 GA..
 FE-16 = DRYWALL FRAME, 16 GA..
 NOTE: = WHEN LABEL FRAMES ARE REQUIRED
 NOTE IN LABEL COLUMN.

DOOR & GAUGE DESIGNATIONS

S-20 = POLYSTYRENE CORE DOOR, 20 GA
 S-18 = POLYSTYRENE CORE DOOR, 18 GA.
 H-20 = HONEYCOMB CORE DOOR, 20 GA.
 H-18 = HONEYCOMB CORE DOOR, 18 GA.
 P-20 = POLYURETHANE CORE DOOR, 20 GA.
 P-18 = POLYURETHANE CORE DOOR, 18 GA.
 P-16 = POLYURETHANE CORE DOOR, 16 GA.
 PS-18 = POLYURETHANE CORE DOOR, 18 GA
 WITH VERTICAL STIFFENERS.
 M-18 = LABEL COMPOSITE CORE DOOR, 18 GA.
 NOTE: WHEN DESIGNATING LABEL DOORS
 NOTE RATING REQUIRED IN LABEL
 COLUMN.
 A - LABEL = 3 HOUR
 B - LABEL = 1 1/2 HOUR
 C - LABEL = 3/4 HOUR
 D - LABEL = 1 1/2 HOUR
 E - LABEL = 3/4 HOUR
 20 MINUTE = 1/3 HOUR

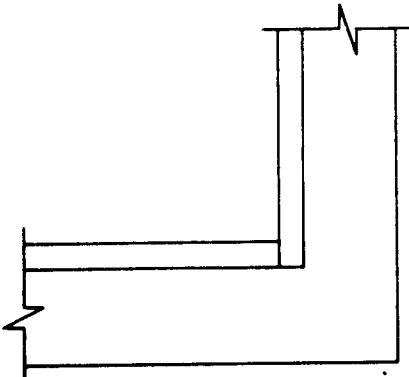
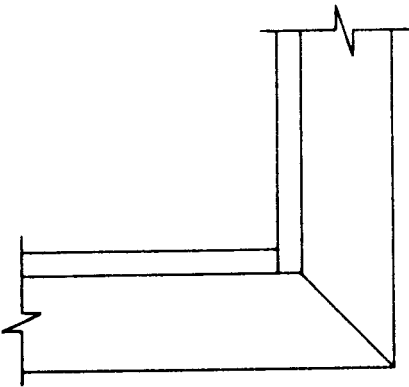
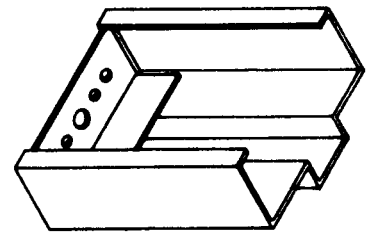
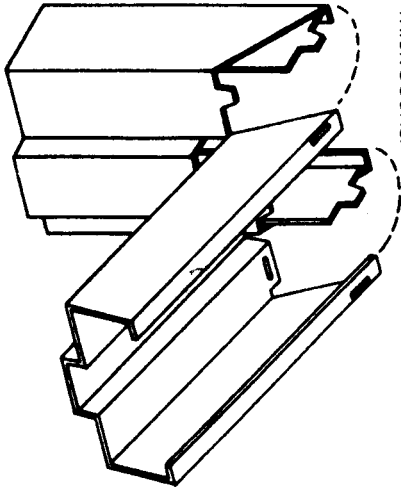
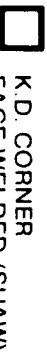
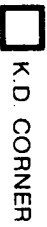
PREMIER

GENERAL INFORMATION AND NOTES

DRAWN BY .	JOB NO.
DATE .	SHEET _____ OF _____

PREMIER

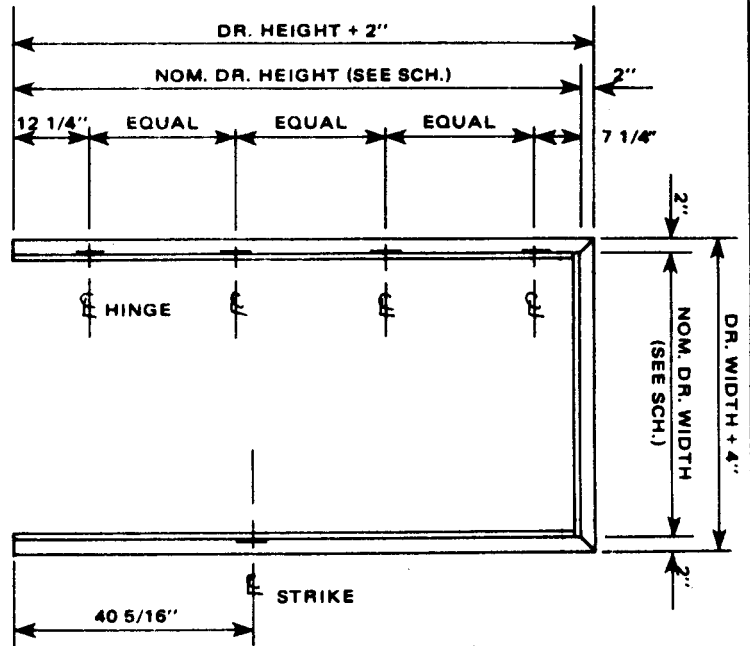
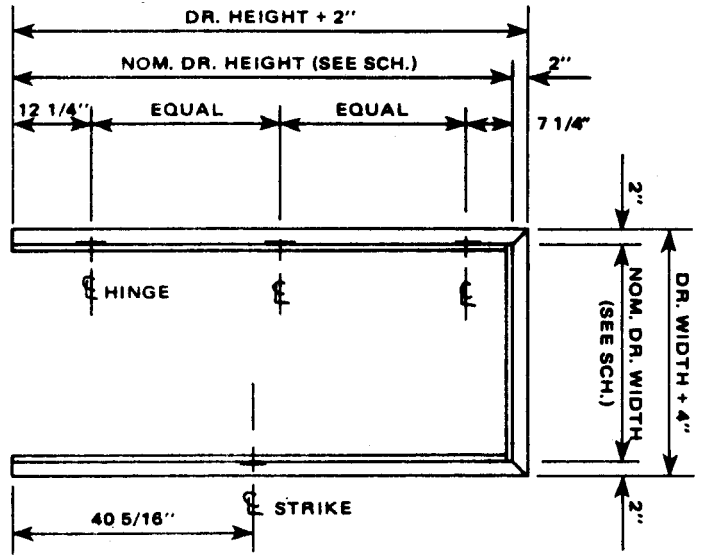
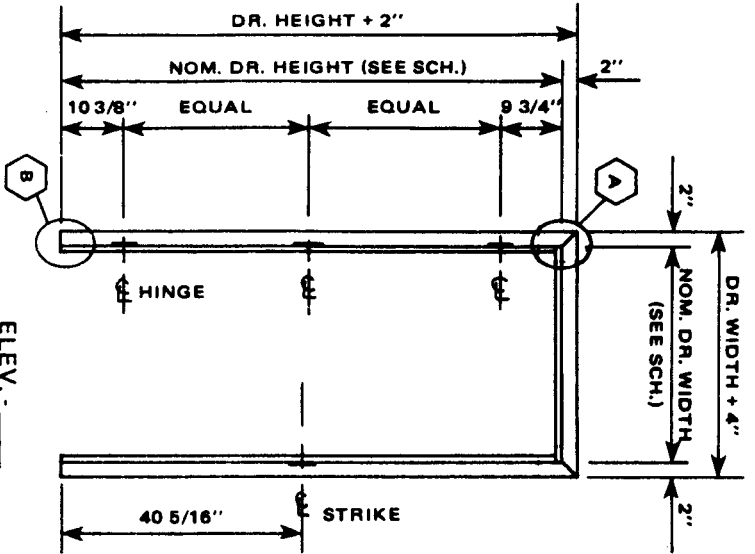
CONVENTIONAL WALL FRAMES - SERIES F



ELEV. - _____
 FRAME HINGE SPACING FOR 1 3/8" THICK DOORS. OMIT CENTER HINGE FOR 6" - 8" HIGH NON-LABEL DOORS. STANDARD HINGE BACKSET IS 1/2" ON FRAMES FOR 1 3/8" THICK DOORS.

ELEV. - _____
 FRAME HINGE SPACING FOR 1 3/4" THICK DOORS 6" - 8" THRU 7' - 2" HIGH. STANDARD HINGE BACKSET IS 3/8" ON FRAMES FOR 1 3/4" THICK DOORS.

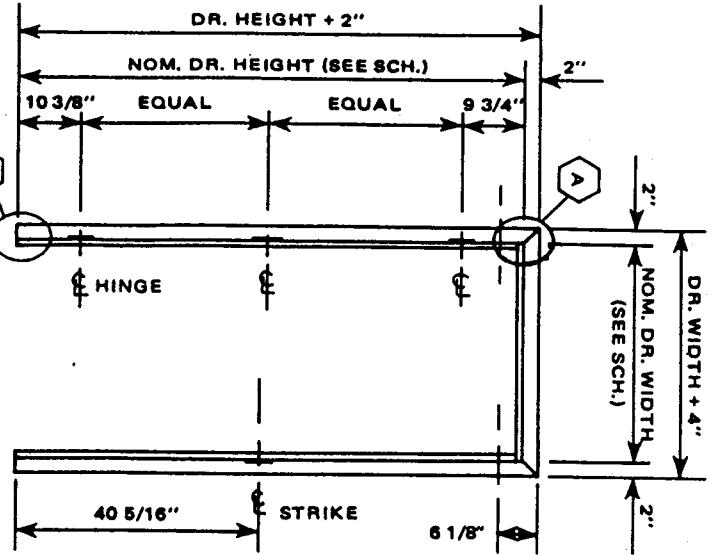
ELEV. - _____
 FRAME HINGE SPACING FOR 1 3/4" THICK DOORS OVER 7' - 2". STANDARD HINGE BACKSET IS 3/8" ON FRAMES FOR 1 3/4" THICK DOORS.



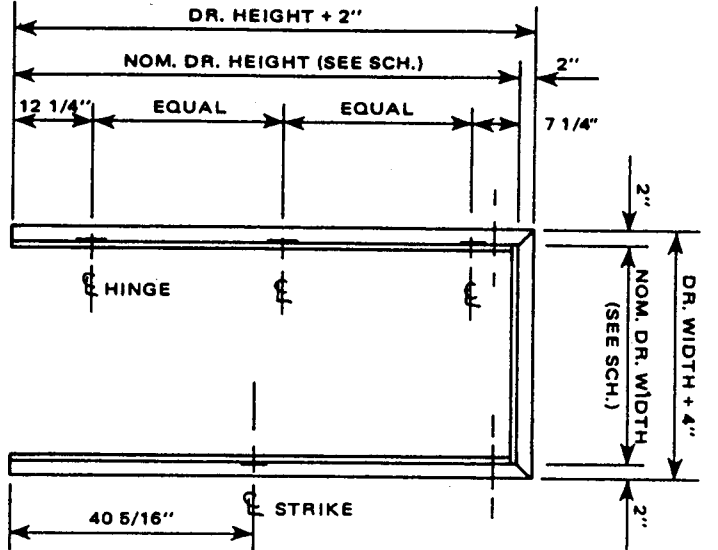
DRAWN BY . . .	JOB NO. . .
DATE . . .	SHEET . . . OF . . .

PREMIER

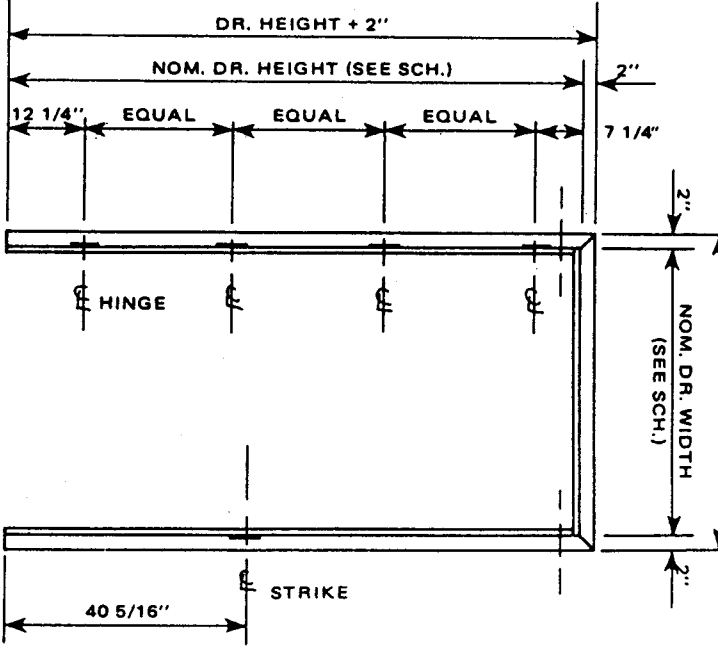
DRYWALL FRAMES - SERIES FE



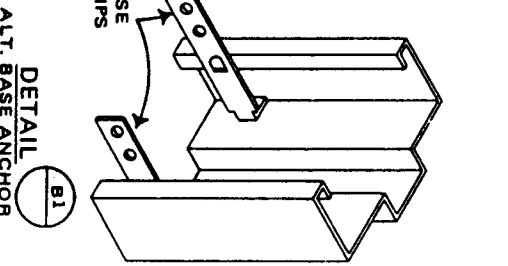
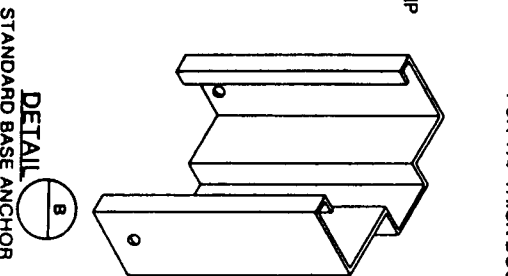
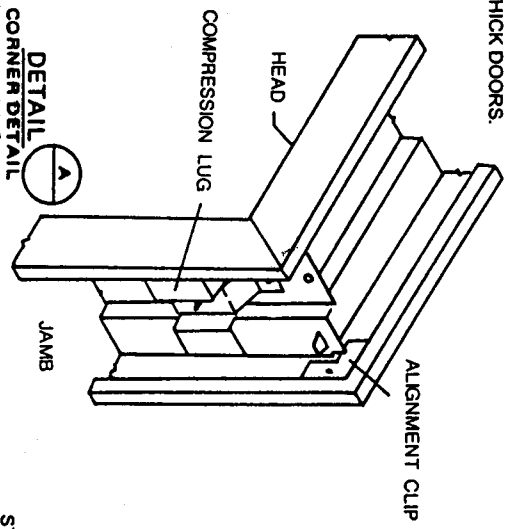
FRAME HINGE SPACING FOR 1 3/8\"/>



FRAME HINGE SPACING FOR 1 3/4\"/>



FRAME HINGE SPACING FOR 1 1/2\"/>

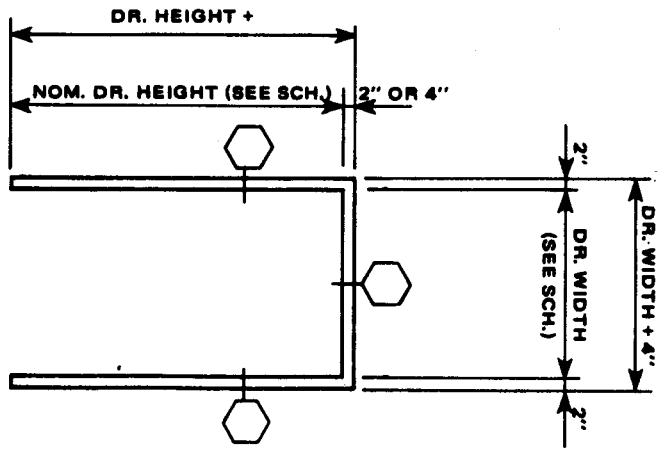


NOTE:
 DRYWALL LABELED FRAMES ARE AVAIL-
 ABLE IN 16 GA. ONLY. THE MAXIMUM SIZE
 AVAILABLE IS 4'-0" x 8'-0" SINGLE SWING,
 DOUBLE SWING DRYWALL FRAMES FOR
 PAIRS OF DOORS UP TO 6'-0" x 9'-0" ARE
 AVAILABLE.

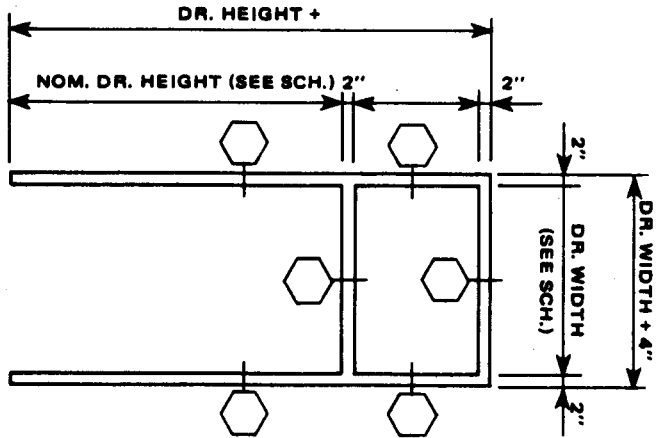
DRAWN BY . . .	JOB NO.
DATE	SHEET OF

PREMIER

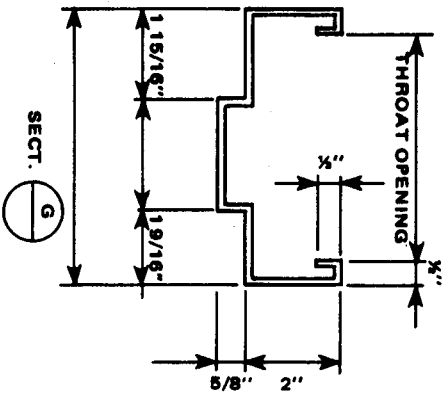
FRAME ELEVATIONS AND SECTIONS



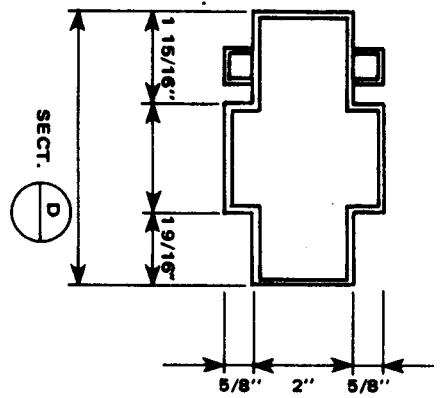
ELEV. - 1



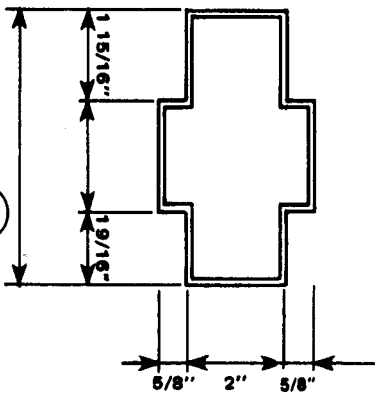
ELEV. - 2



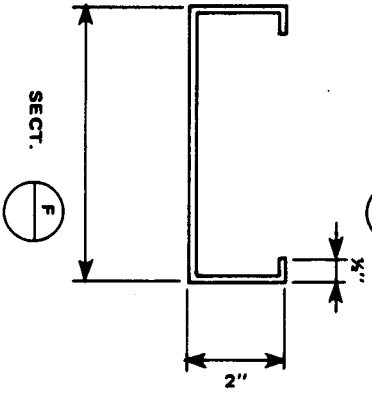
SECT. G



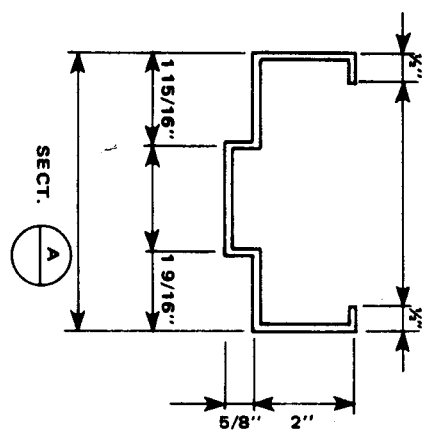
SECT. D



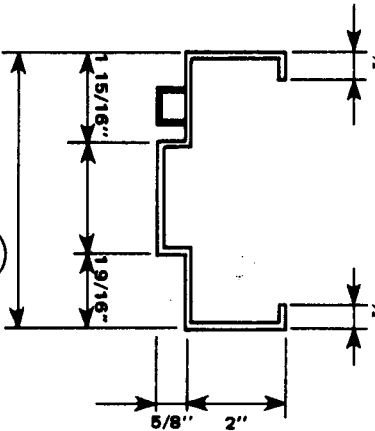
SECT. E



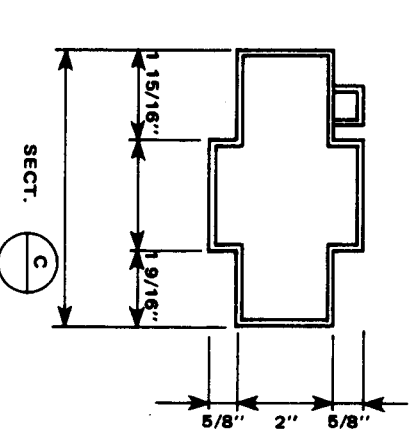
SECT. F



SECT. A



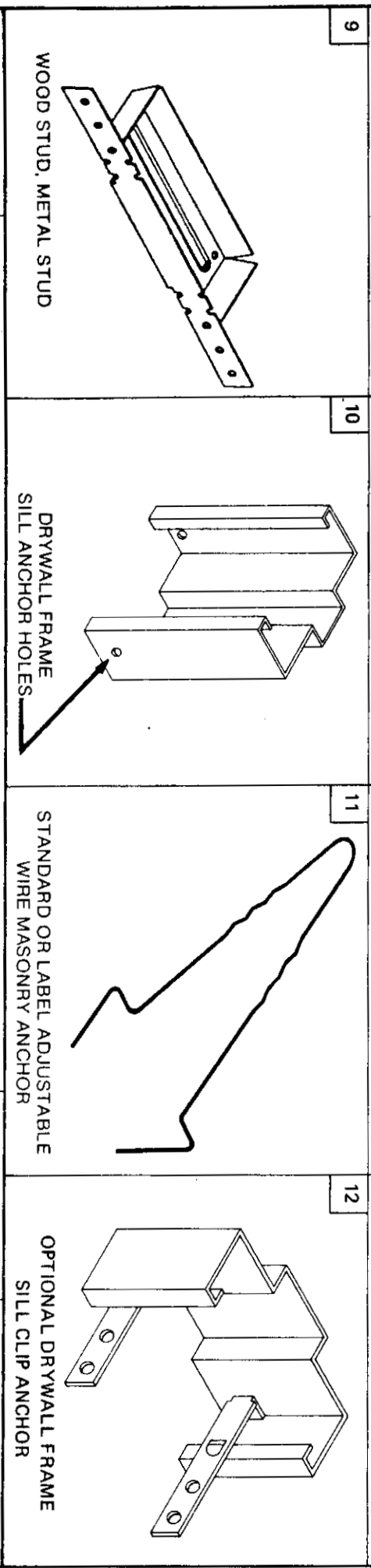
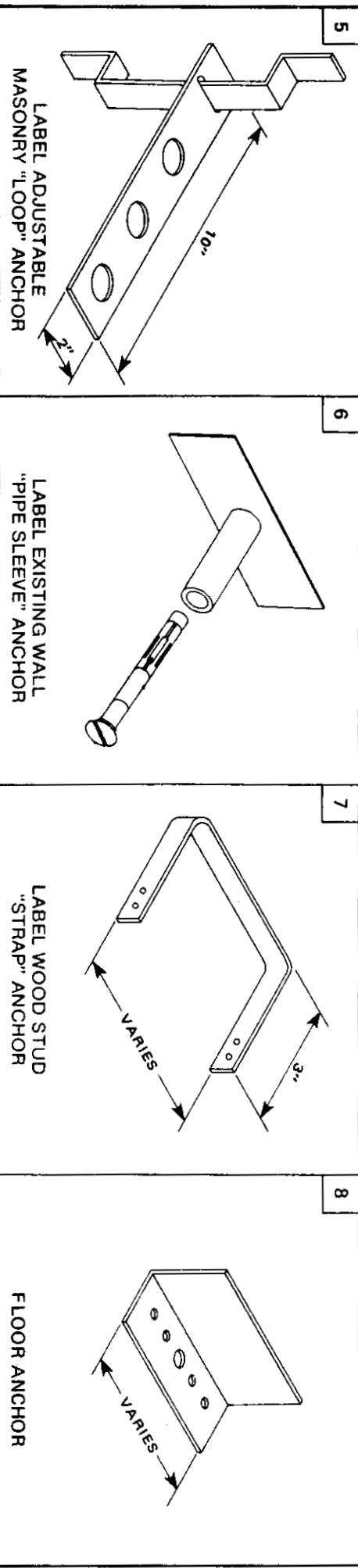
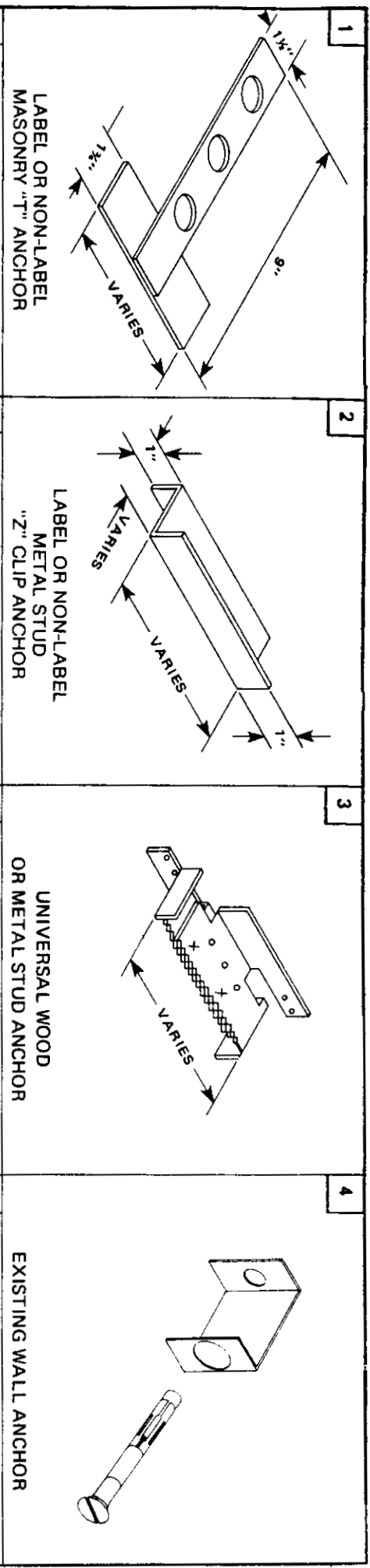
SECT. B



SECT. C

DRAWN BY .
DATE .

JOB NO. _____
SHEET _____ OF _____



PREMIER

FRAME ANCHOR DETAILS

DRAWN BY

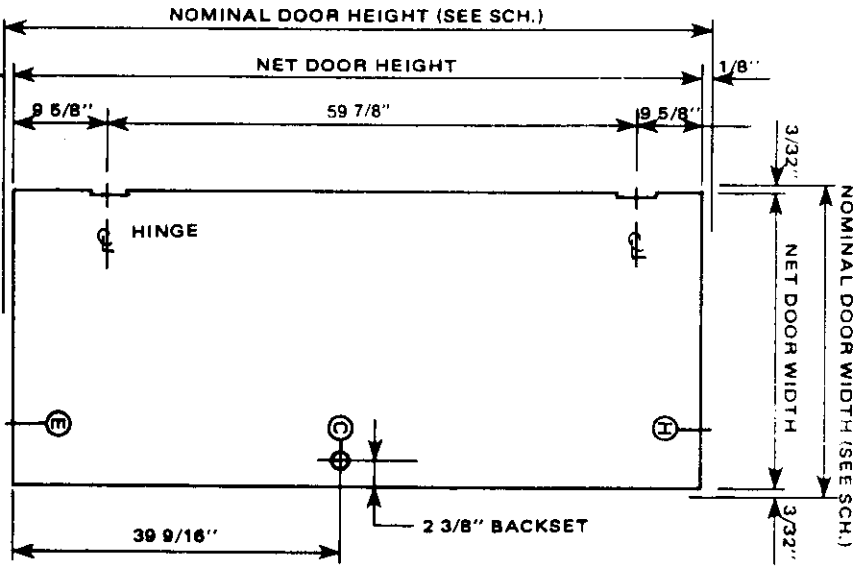
DATE

JOB NO.

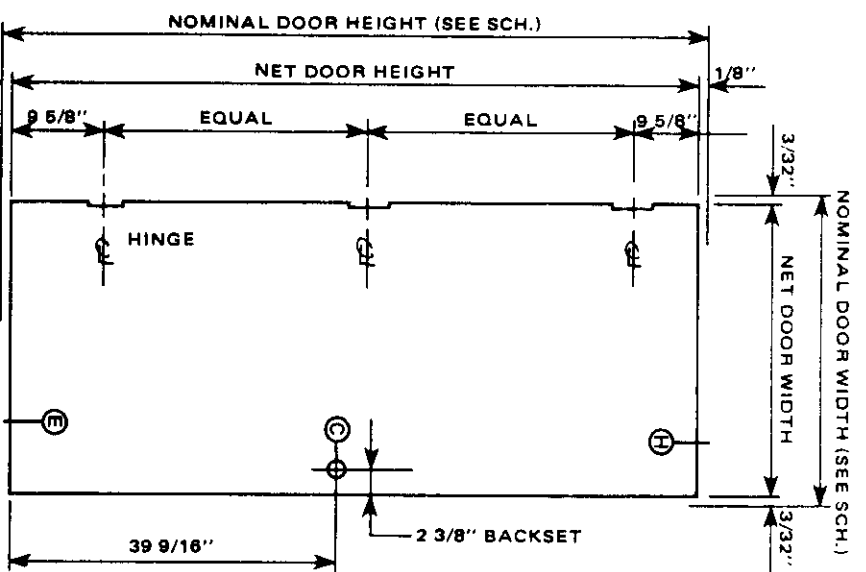
SHEET OF

PREMIER

POLYSTYRENE CORE 1 7/8" THICK DOOR ELEVATIONS AND DETAILS



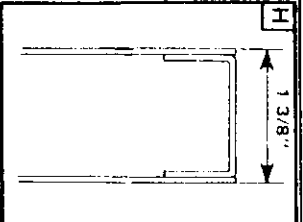
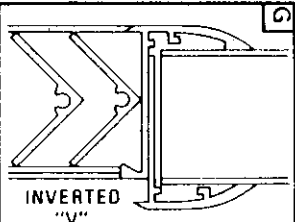
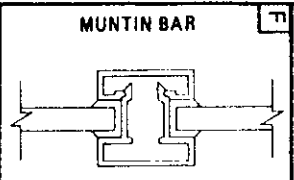
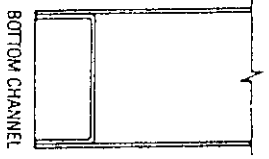
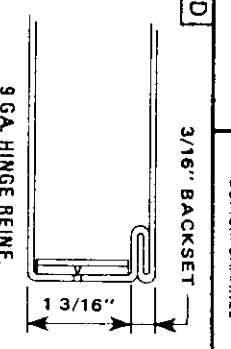
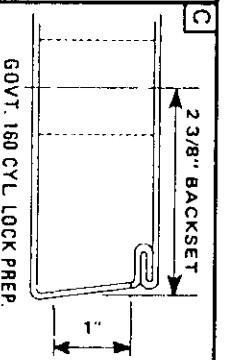
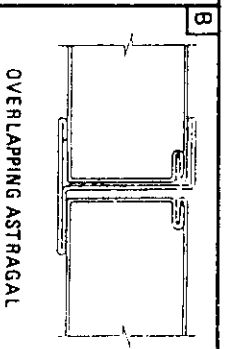
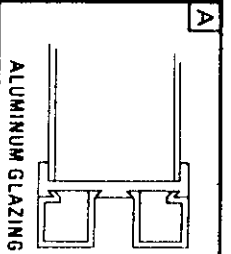
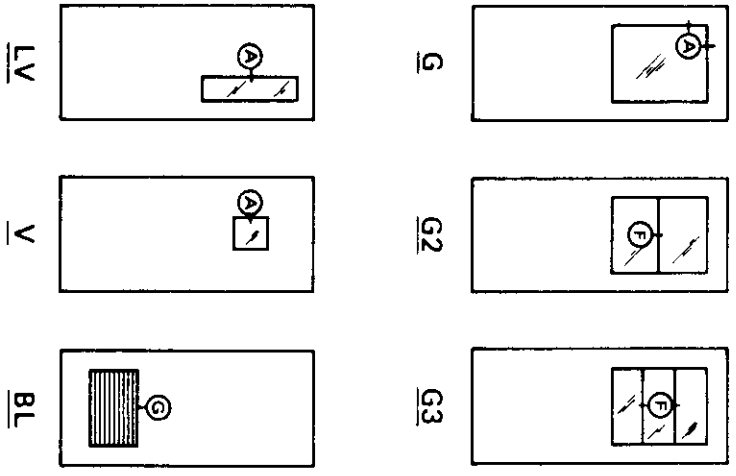
6' - 8" HIGH DOOR STANDARD
HARDWARE LOCATION



7' - 0" OR 7' - 2" HIGH DOOR STANDARD
HARDWARE LOCATION

NOTE:

Dimension shown for lock prep. is for Gov't 160 locks. When Gov't 86 lock is to be used (ANSI A115.1) dimension to center of lock is 3/8" less than indicated.



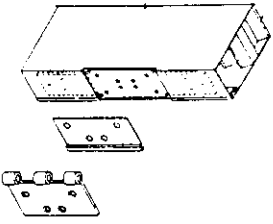
DRAWN BY: _____ DATE: _____
JOB NO. _____ SHEET _____ OF _____

PREMIER

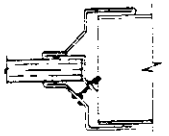
POLYSTYRENE, HONEYCOMB OR POLYURETHANE CORE 1 3/4" THICK DOOR ELEVATIONS AND DETAILS

OMNI REVERSIBLE DOOR

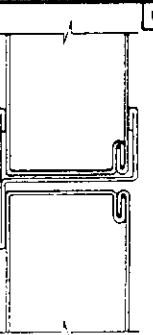
REVERSIBLE HINGE PREP



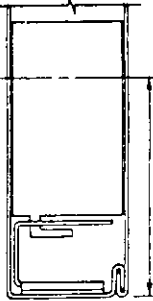
STEEL GLAZING BEAD



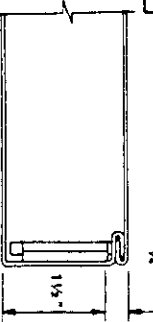
OVERLAPPING ASTRAGAL



GOVT. 161 CYL. LOCK PREP.



9 GA. HINGE REINF.



A

B

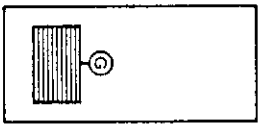
C

D

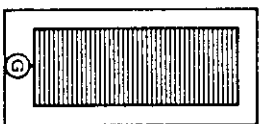
NOTE: Dimension shown for lock prep. is for Gov't 161 locks. When Gov't 86 lock is to be used (ANSI A115.1) dimension to center of lock is 3/8" less than indicated.

LITE & LOUVER DETAILS MAY VARY

BL

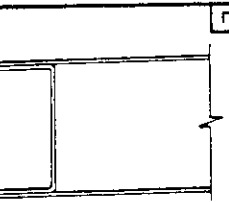


FL



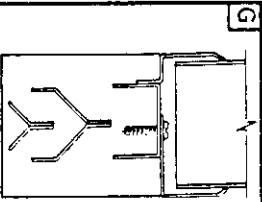
18 & 16 GA. ONLY

BOTTOM CHANNEL



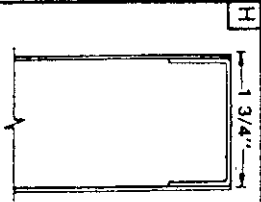
E

STEEL LOUVER



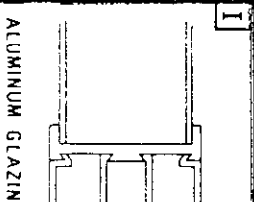
G

TOP CHANNEL



H

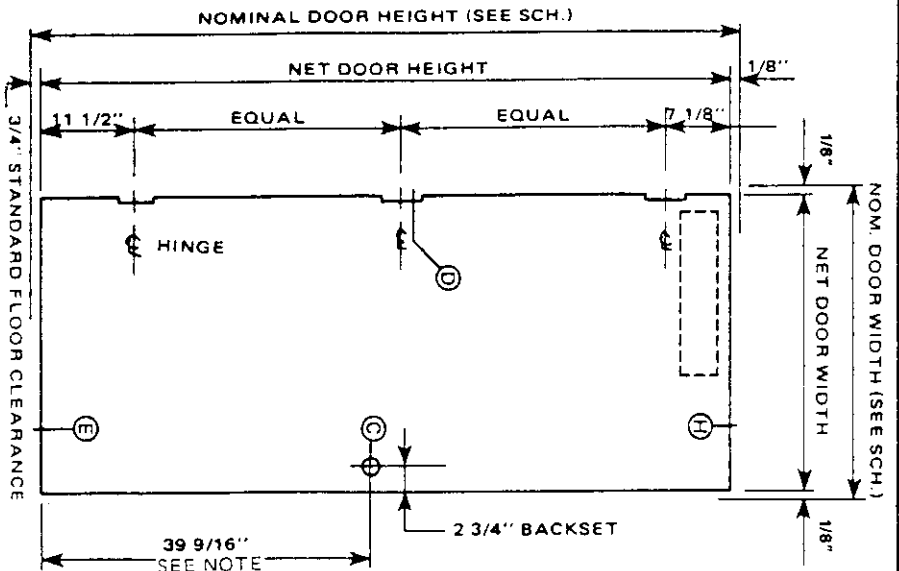
ALUMINUM GLAZING BEAD



I

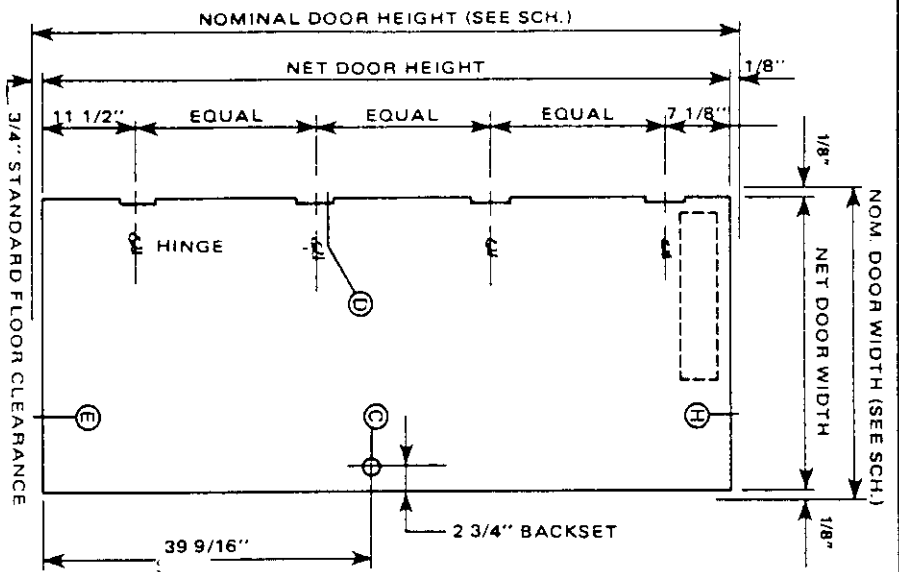
6" - 8" THRU 7' - 2" HIGH DOOR STANDARD HARDWARE LOCATION

F



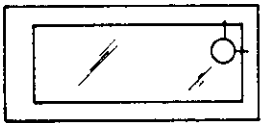
OVER 7' - 2" THRU 9' - 0" HIGH DOOR STANDARD HARDWARE LOCATION

F

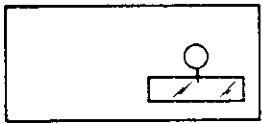


18 & 16 GA. ONLY

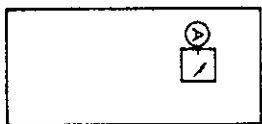
LG



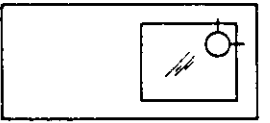
LV



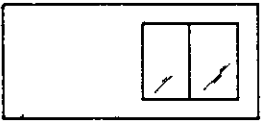
V



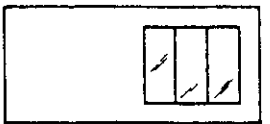
G



G2



G3



PREMIER

LABEL 1 3/4" THICK DOOR ELEVATIONS AND DETAILS



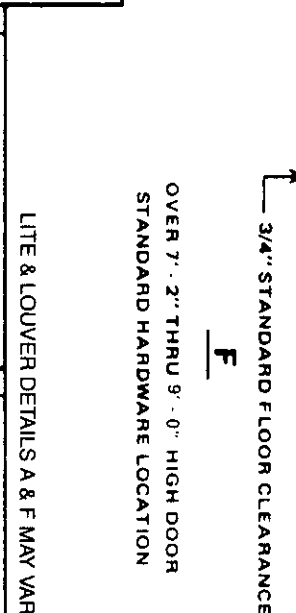
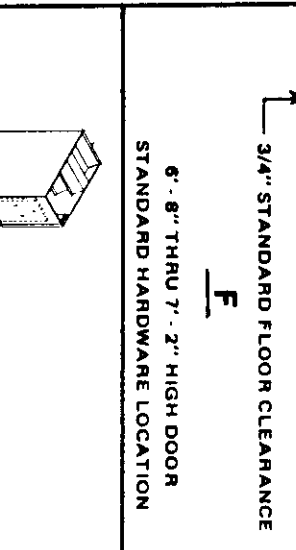
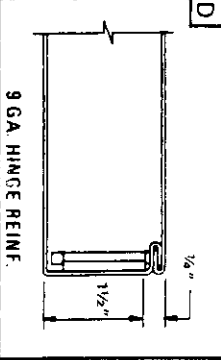
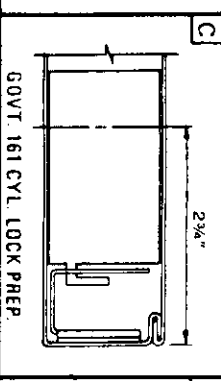
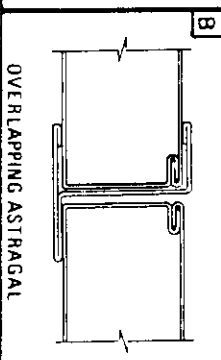
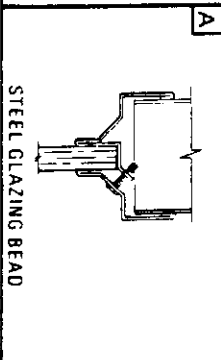
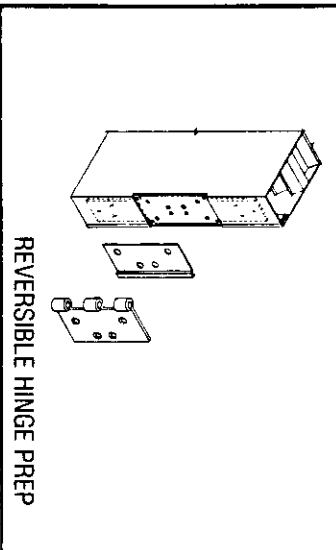
REVERSIBLE DOOR

DRAWN BY . . .

DATE . . .

JOB NO. . .

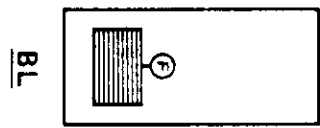
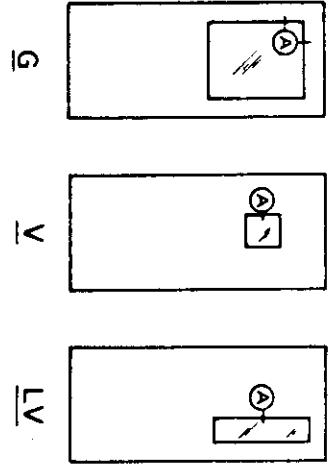
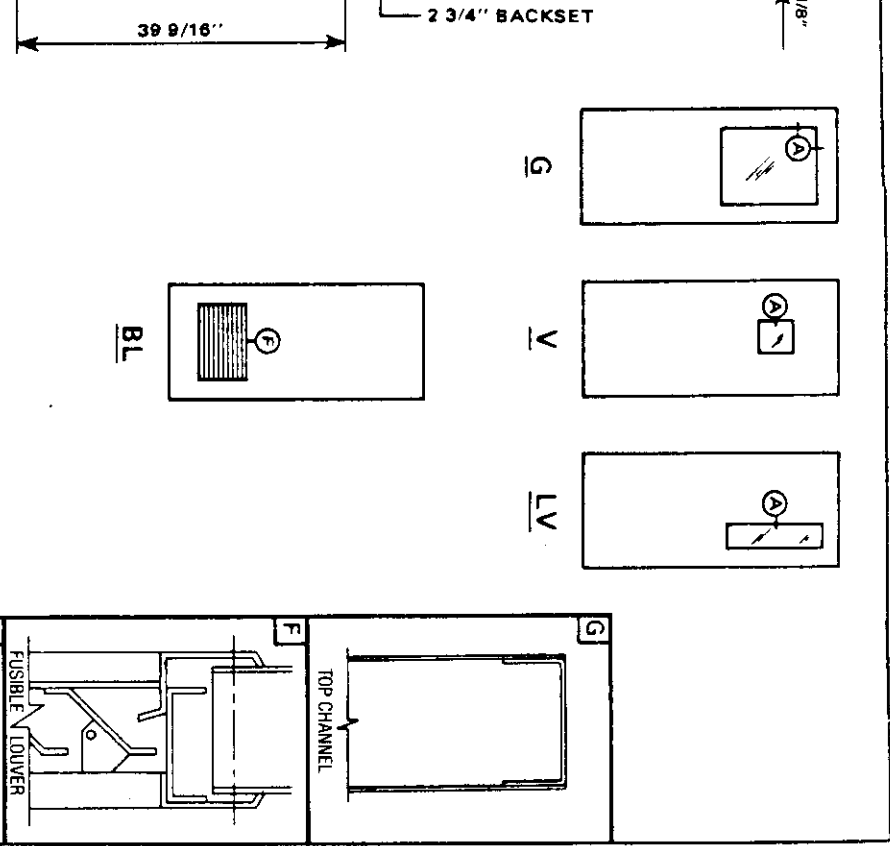
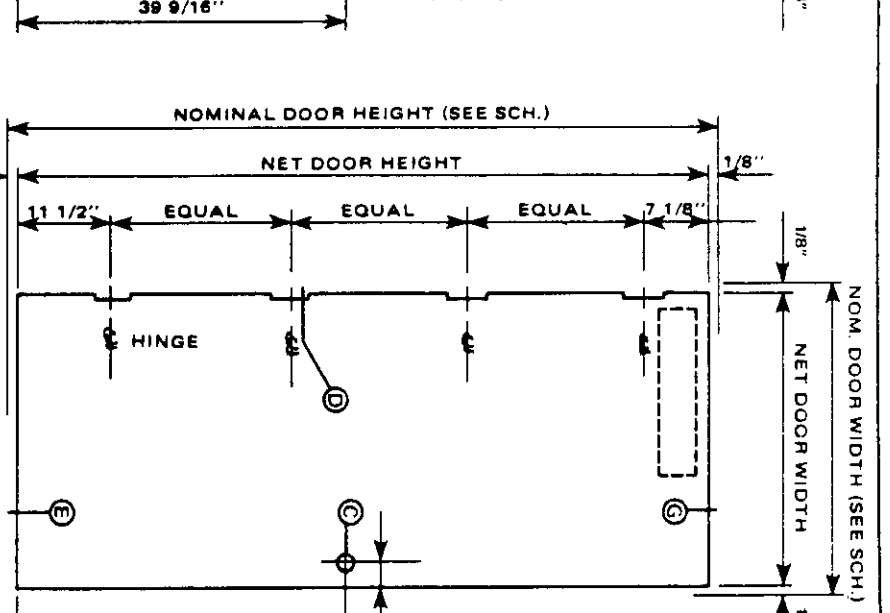
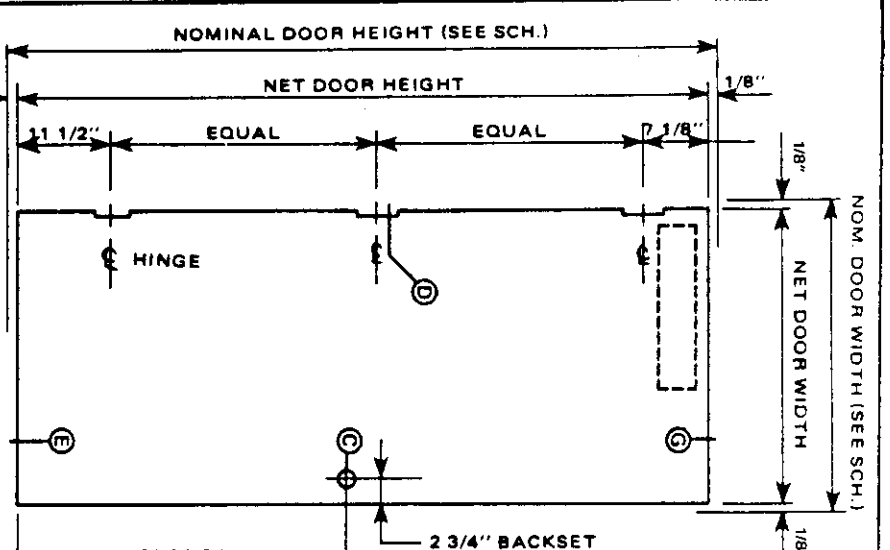
SHEET . . . OF . . .



OVER 7' - 2" THRU 9' - 0" HIGH DOOR
STANDARD HARDWARE LOCATION

NOTE:

Dimension shown for lock prep. is for Gov't 161 locks. When Gov't 86 lock is to be used (ANSI A115.1) dimension to center of lock is 7/8" less than indicated.



PREMIER

SPECIAL FRAMES AND DOORS

DRAWN BY .	JOB NO.
DATE .	SHEET _____ OF _____

